

Customer :

customer

Customer part :

customer part

Comment :

Comment

S1=2.22

S2=2.87

Tmax=460

Tp S2=499.0

PI=0.44

HI=67

Sample =1721.80

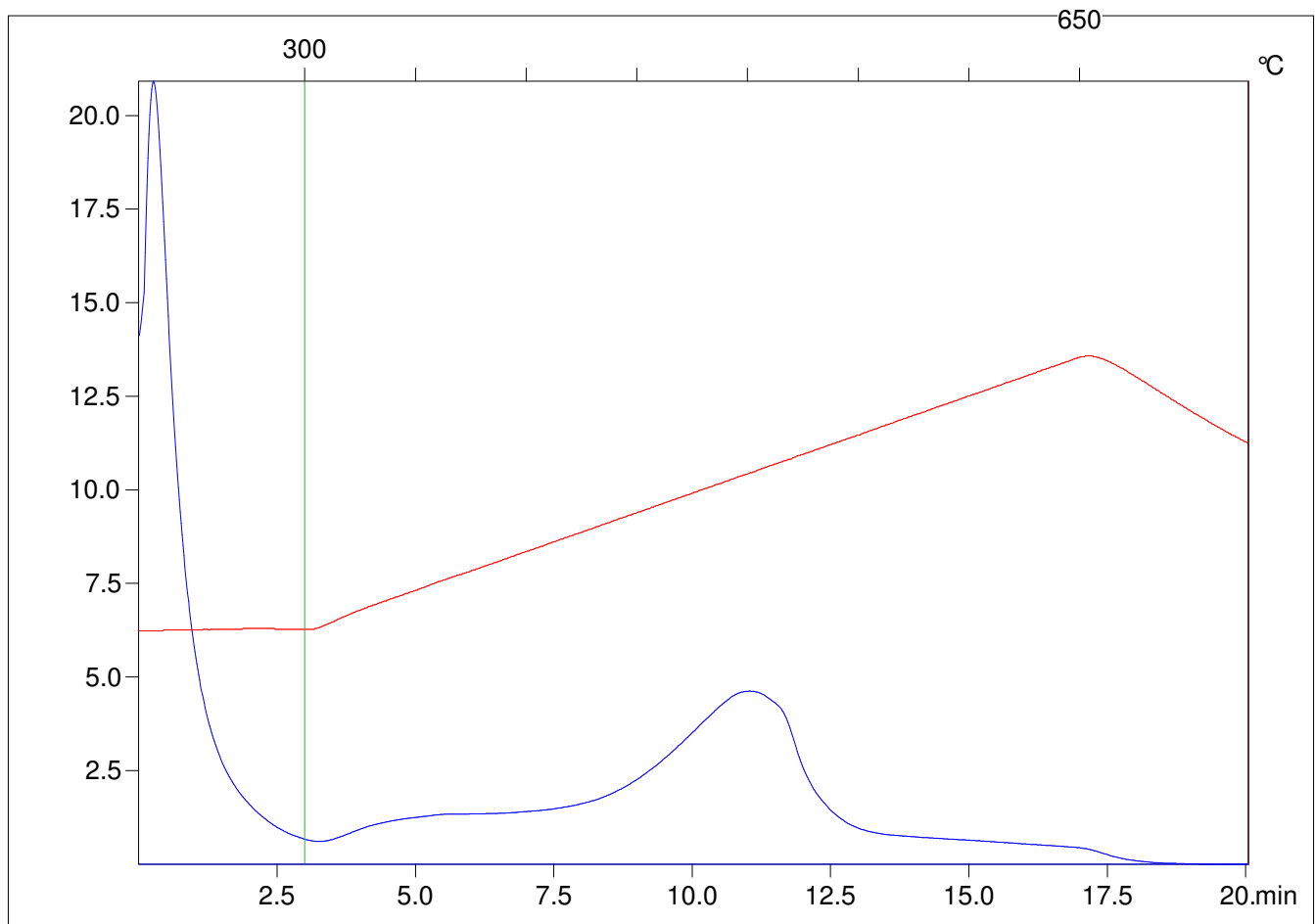
Method =Bulk Rock

Cycle=Basic

KFID(10*9)=1444

Qty =70.4

TOC=4.28



C:\VINC\PK2_1792\PK031.R00 : FID pyrolysis graphic

State

Pyro Status

Oxi Status